

**PPP2R5E Antibody**  
**Rabbit mAb**  
**Catalog # AP93062****Specification**

---

**PPP2R5E Antibody - Product Information**

Application WB, IHC, ICC, IP  
Primary Accession [Q16537](#)  
Clonality Monoclonal  
**Other Names**  
PPP2R5E;

Isotype Rabbit IgG  
Host Rabbit  
Calculated MW 54699 Da

**PPP2R5E Antibody - Additional Information**

Dilution WB~~1:1000  
IHC~~1:100~500  
ICC~~N/A  
IP~~N/A  
Purification Affinity-chromatography  
Immunogen A synthesized peptide derived from human PPP2R5E  
Description The B regulatory subunit might modulate substrate selectivity and catalytic activity, and also might direct the localization of the catalytic enzyme to a particular subcellular compartment.  
Storage Condition and Buffer Rabbit IgG in phosphate buffered saline , pH 7.4, 150mM NaCl, 0.02% sodium azide and 50% glycerol. Store at +4°C short term. Store at -20°C long term. Avoid freeze / thaw cycle.

**PPP2R5E Antibody - Protein Information****Name** PPP2R5E**Function**

The B regulatory subunit might modulate substrate selectivity and catalytic activity, and also might direct the localization of the catalytic enzyme to a particular subcellular compartment.

**Cellular Location**

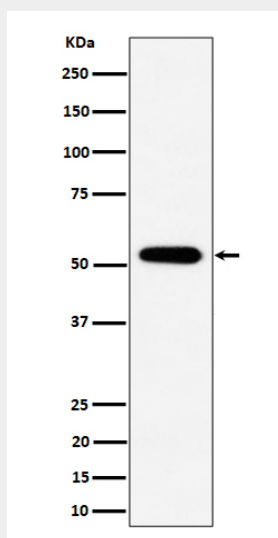
Cytoplasm.

## PPP2R5E Antibody - Protocols

Provided below are standard protocols that you may find useful for product applications.

- [Western Blot](#)
- [Blocking Peptides](#)
- [Dot Blot](#)
- [Immunohistochemistry](#)
- [Immunofluorescence](#)
- [Immunoprecipitation](#)
- [Flow Cytometry](#)
- [Cell Culture](#)

## PPP2R5E Antibody - Images



Western blot analysis of PPP2R5E expression in 293 cell lysate.